



Managing Trade-Offs:  
*Ensuring Attention to Nature  
when Planning Development Finance*

**Valerie Hickey**  
**The World Bank**  
**February 7, 2013**



## Why should we care?

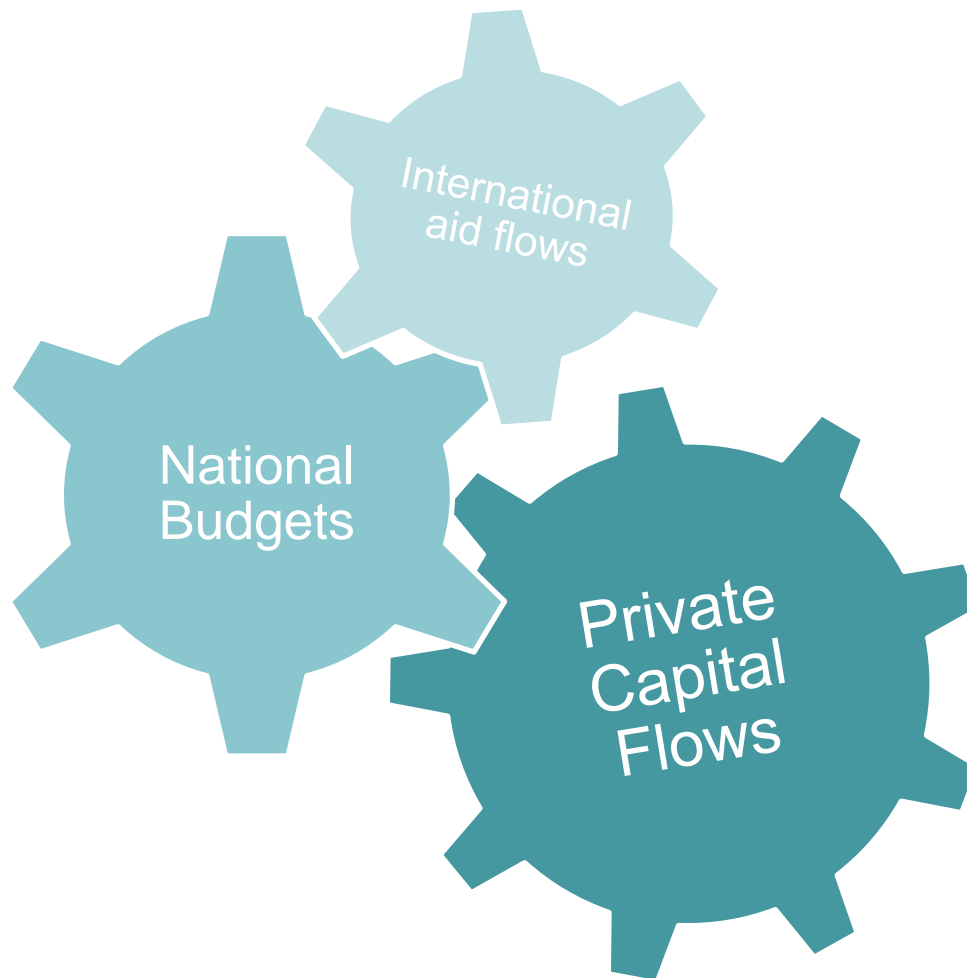
Trade-offs

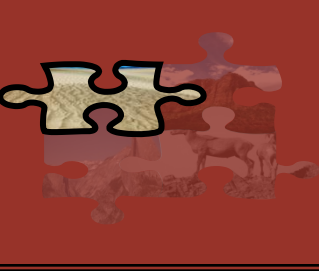
Necessary enabling conditions

The real world challenges

## What is development finance?

*Scale of biodiversity flows compared to other development assistance – existing money (2010)*





## Why should we care?

Trade-offs

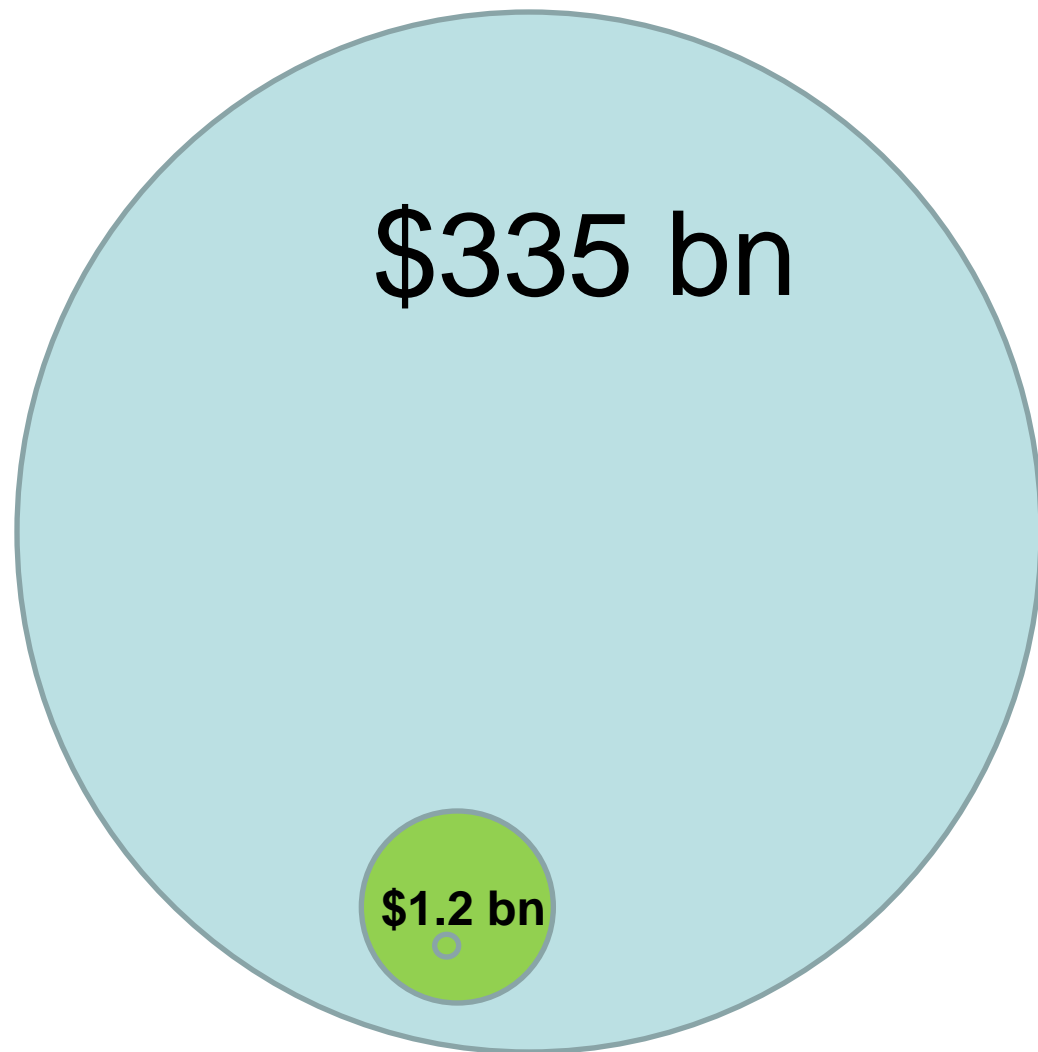
Necessary enabling conditions

The real world challenges

## What is development finance?

*Scale of international biodiversity flows compared to other development assistance – existing money (OCED, 2010)*

**0.0035%**





Why should we care?

**Trade-offs**

Necessary enabling conditions

The real world challenges

*The Good: Increasing our slice of the pie by mainstreaming biodiversity in development finance*

*The Bad: We are only so many*

*The Ugly: Biodiversity as boutique*





Why should we care?

**Trade-offs**

Necessary enabling conditions

The real world challenges

*The Good: Increasing our slice of the pie by mainstreaming biodiversity in development finance*

*The Bad: We are only so many...*

*The Ugly: Biodiversity as boutique*





Why should we care?

Trade-offs

Necessary enabling conditions

The real world challenges

*The Good: Increasing our slice of the pie by mainstreaming biodiversity in development finance*

*The Bad: We are only so many*

*The Ugly: Biodiversity as boutique*





Why should we care?

Trade-offs

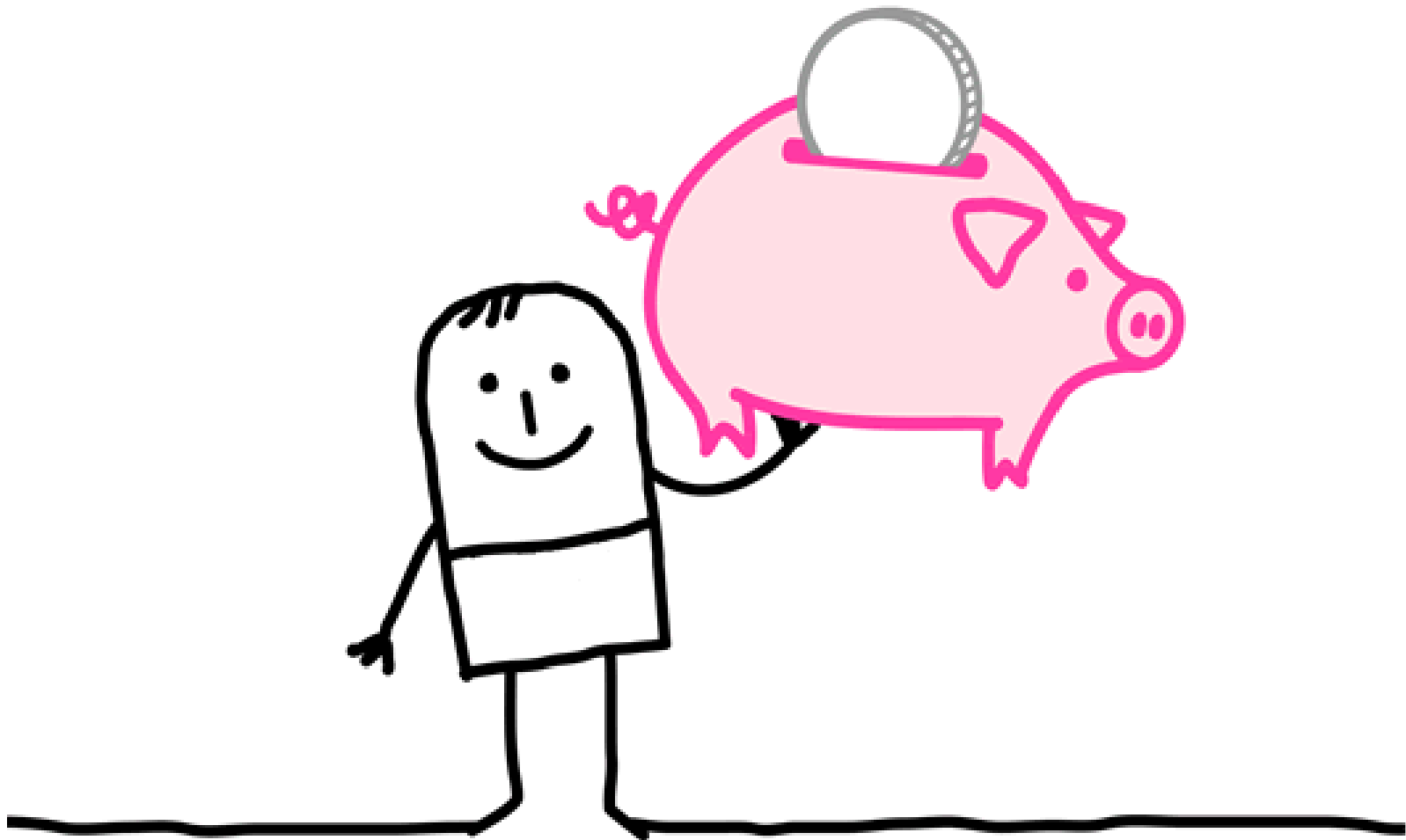
**Necessary enabling conditions**

The real world challenges

*Cash*

*Delivery mechanisms*

*Safeguards*





Why should we care?

Trade-offs

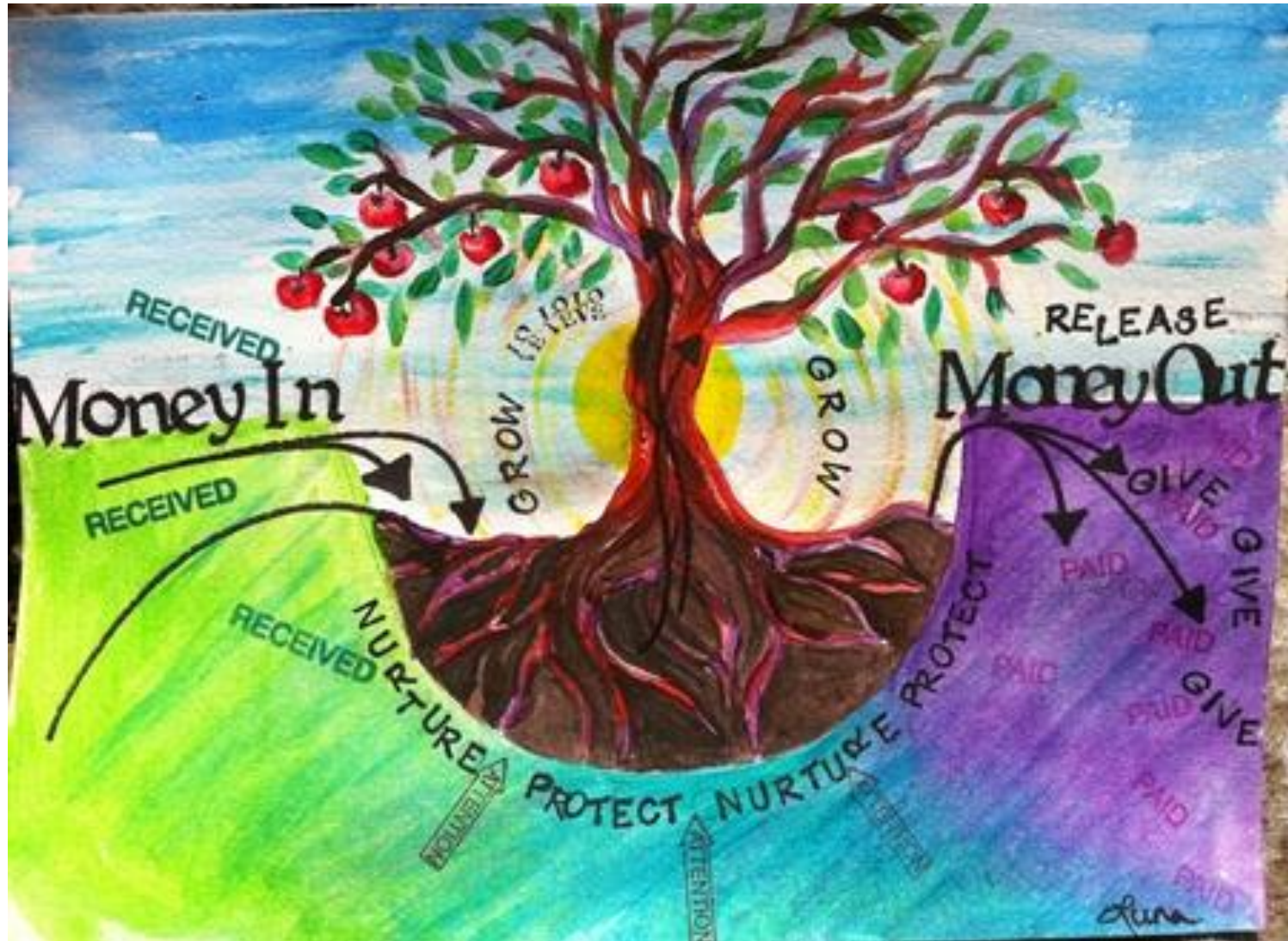
**Necessary enabling conditions**

The real world challenges

*Cash*

*Delivery mechanisms*

*Safeguards*







Why should we care?

Trade-offs

**Necessary enabling conditions**

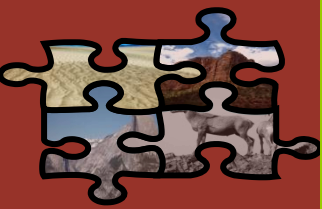
The real world challenges

*Cash*

*Delivery mechanisms*

*Safeguards*





Why should we care?

*Many, and varied*

Trade-offs

Necessary enabling conditions

**The real world challenges**

